



Bundesministerium  
für Wirtschaft  
und Energie



# Social approach for energy projects in Chile

Ministry of Energy  
June, 2016



Durchführer





**ENERÍA 2050**  
POLÍTICA ENERGÉTICA DE CHILE

# Social approach for energy projects in Chile

Ministry of Energy  
June, 2016



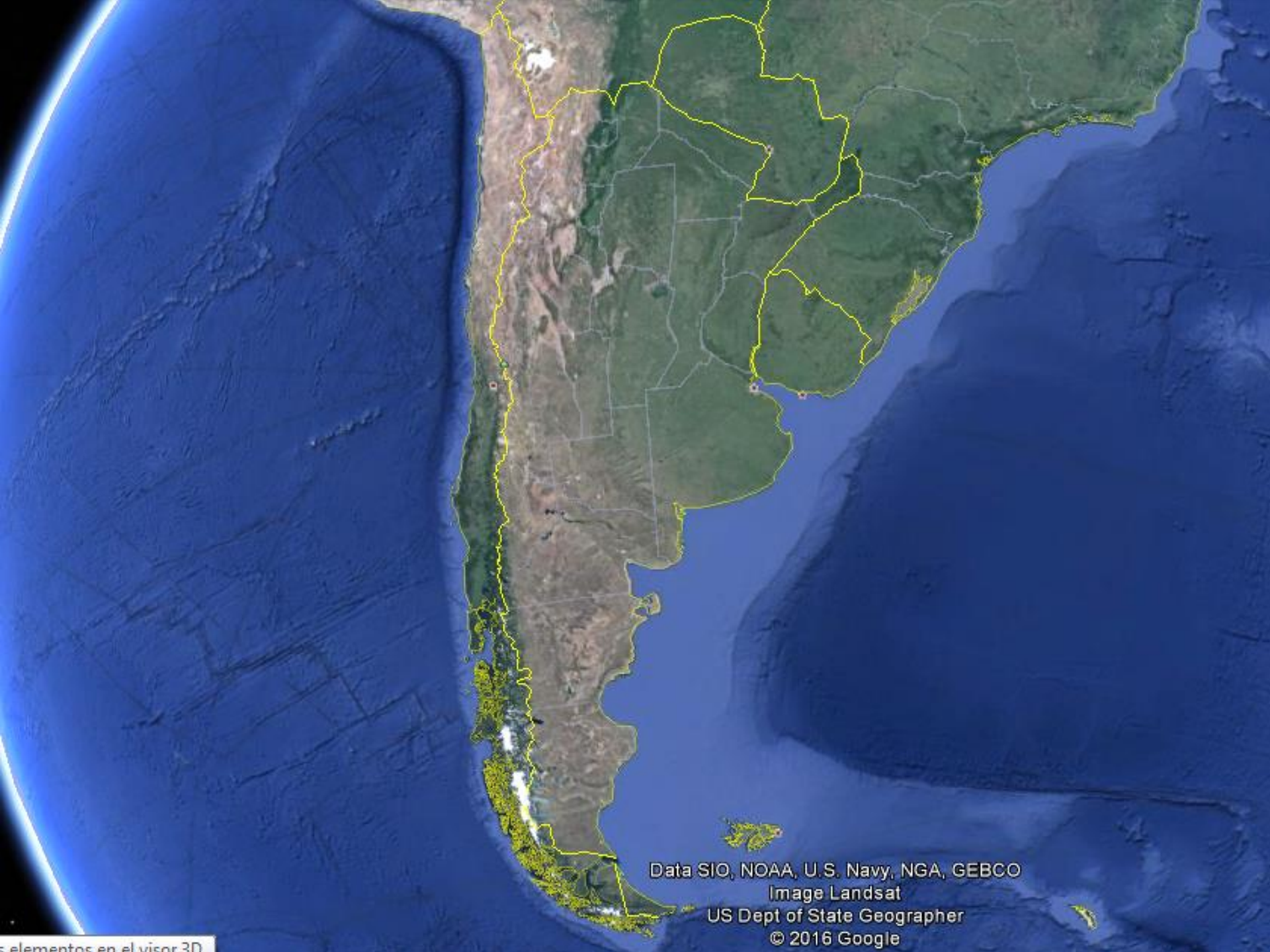


Data SIO, NOAA, U.S. Navy, NGA, GEBCO  
© 2016 Google  
US Dept of State Geographer  
© 2016 Basarsoft

GOO

Fecha de las imágenes: 12/13/2015 38°34'31.57" S 41°55'54.94" O alt.





Data SIO, NOAA, U.S. Navy, NGA, GEBCO  
Image Landsat  
US Dept of State Geographer  
© 2016 Google





Golfo de Arauco

Concepción

Chillán

VIII Región

Santa Bárbara

Curacautín

Temuco

IX Región

Valdivia

Data SIO, NOAA, U.S. Navy, NGA, GEBCO

© 2016 Google

Image Landsat

US Dept of State Geographer

Fecha de las imágenes: 12/13/2015

38°03'12.20" S 71°57'08.11" O elev 0 m



CH Angostura 316MW



CH Pintoresco <1MW





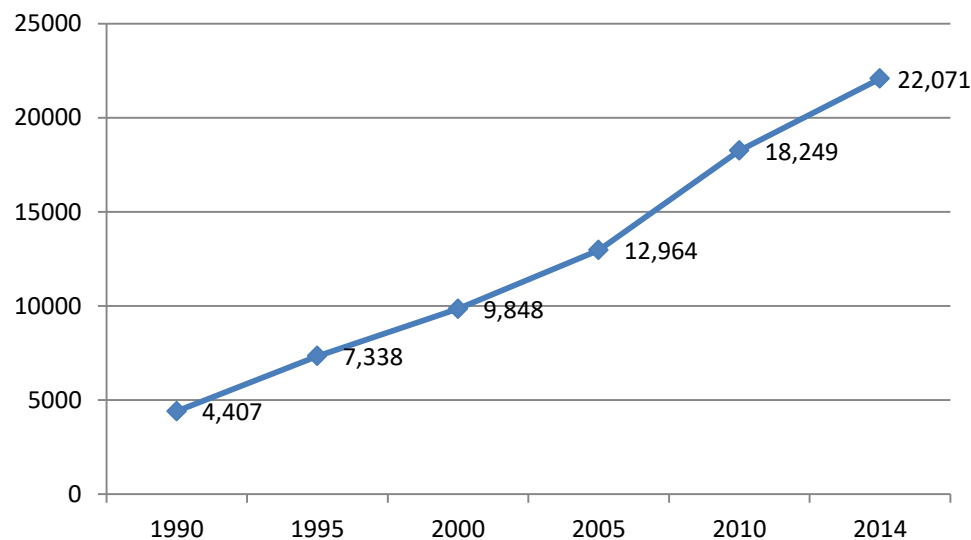
# Chile



**ENERÍA 2050**  
POLÍTICA ENERGÉTICA DE CHILE

## GDP per capita Chile (current international US\$)

The World Bank



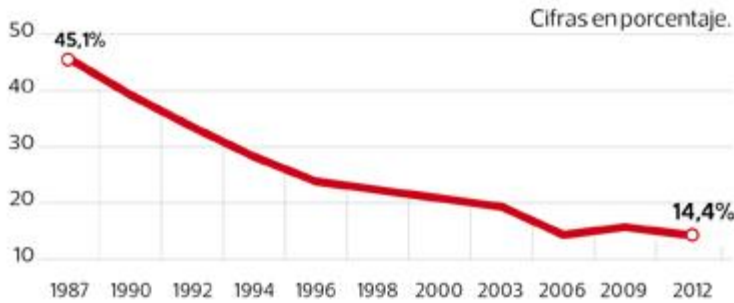
	2015		
	PIB <sup>2</sup> (USD, miles de mill.)	Población (Millones)	PIB per cápita (\$PPA)
<b>América del Norte</b>			
Canadá	1.552,4	35,8	45.553
México	1.144,3	127,0	17.534
Estados Unidos	17.947,0	321,6	55.805
Puerto Rico <sup>8</sup>	101,6	3,5	37.952
<b>América del Sur</b>			
Argentina <sup>9</sup>	585,6	43,1	22.554
Bolivia	33,2	11,5	6.465
Brasil	1.772,6	204,5	15.615
<b>Chile</b>	<b>240,2</b>	<b>18,0</b>	<b>23.460</b>
Colombia	293,2	48,2	13.847
Ecuador	98,8	16,3	11.264
Guyana	3,2	0,8	7.509
Paraguay	28,1	7,0	8.708
Perú	192,1	31,9	12.195
Suriname	5,2	0,6	16.292
Uruguay	53,8	3,4	21.507
Venezuela <sup>10</sup>	239,6	30,9	16.673





# Chile

## Poverty evolution in Chile



FUENTE: Encuesta Casen 2012.

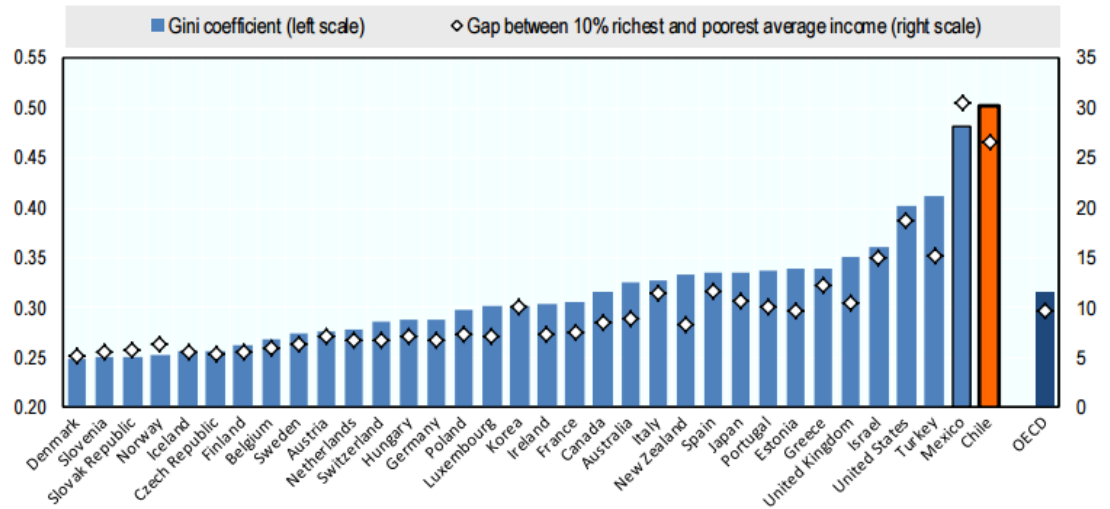
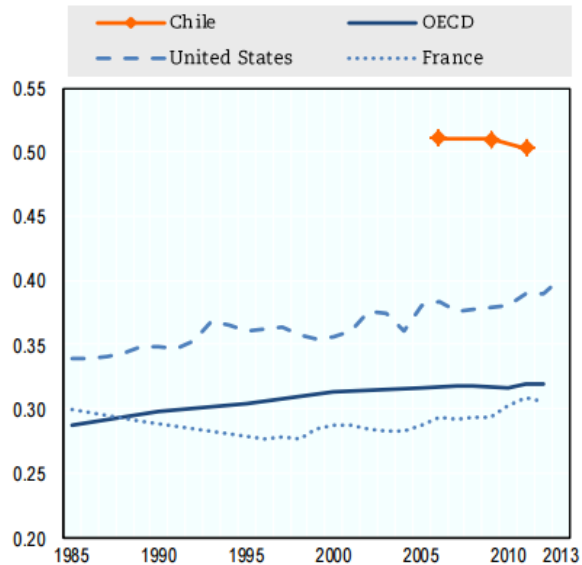
LA TERCERA

## Latin America: Average Income and Inequality, 2000-2010



## Level of income inequality, 2013 or latest year

## Trends in income inequality, Gini coefficient



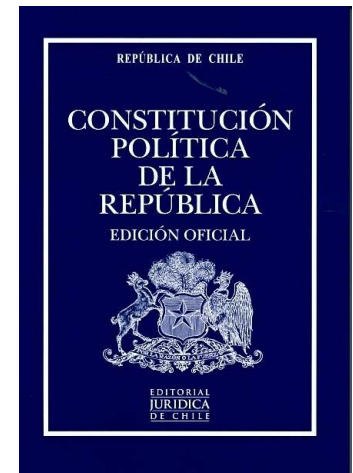
# Reforms to face social and productivity challenges



Education

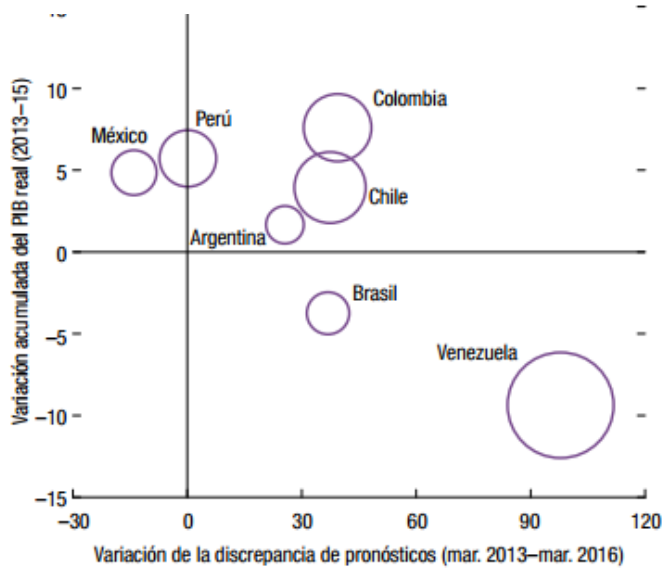


Taxes

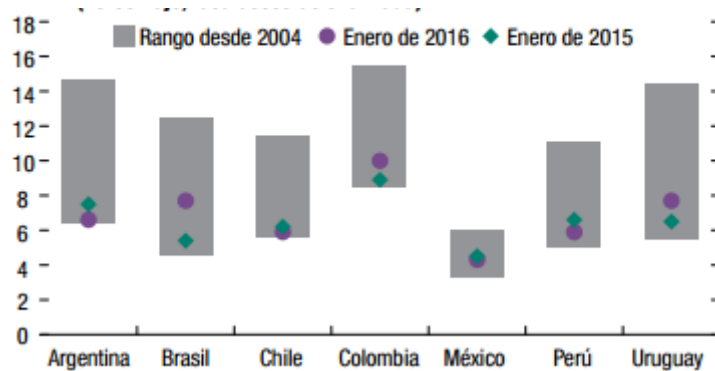


Constitution

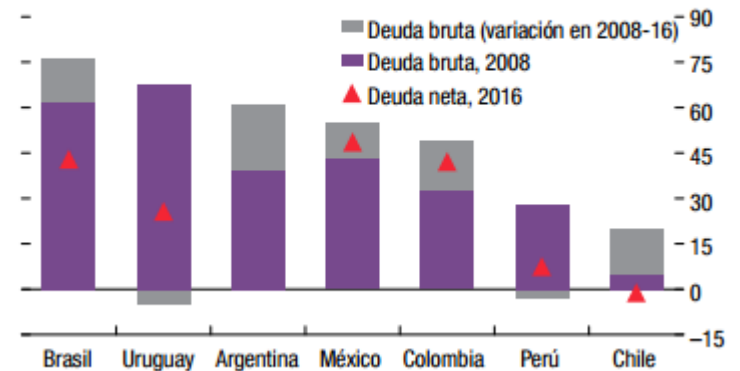
## GDP Growth



## Unemployment rate



## Public debt (GDP %)





# Indigenous communities

Indigenous Communities Population (Census 2002)		
Ethnicity	Population	% ↕
Mapuche	604 349	4,00
Aimara	48 501	0,32
Atacameño	21 015	0,14
Quechua	6175	0,04
Rapanui	4647	0,03
Kolla	3198	0,02
Kawésqar	2622	0,02
Yagán	1685	0,01
<b>Total</b>	<b>692 192</b>	<b>4,58</b>

Diaguitas were recognized as official indigenous community at 2006

- Officially ILO Convention 169 has been in effect in Chile since September 15, 2009.
- Consultation
- Participatiion

2014



**ENERÍA 2050**  
POLÍTICA ENERGÉTICA DE CHILE



B.A.N.A.N.A.

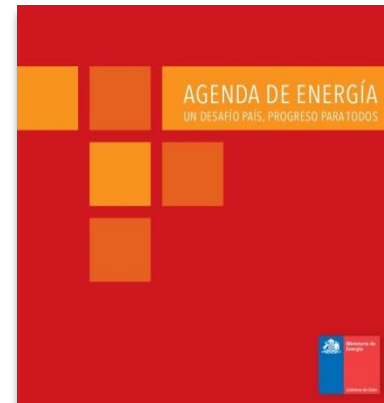
N.I.M.B.Y.



# What is the Ministry of Energy doing about it?



**ENERGÍA 2050**  
POLÍTICA ENERGÉTICA DE CHILE





# Participation as a new “ethos”



**ENERÍA 2050**  
POLÍTICA ENERGÉTICA DE CHILE

- Energy offices all over the country (15 regions).
- Territorial ordering and cuencas studies.
- Regional and local energy plans.
- Project Management Unit
- Energy policies developed with participatory projects
- Engagement and Dialogue Department

Engagement

Asociativity

First nations



# POWER PLANTS UNDER CONSTRUCTION (SIC + SING)

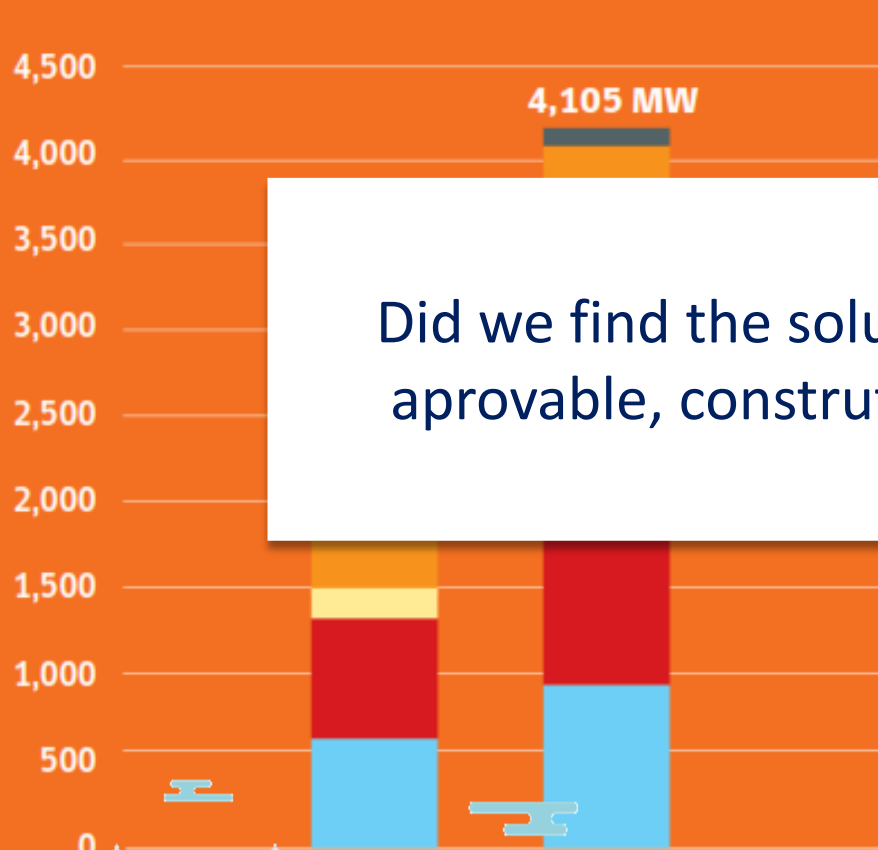
MARCH 2016



ENERGÍA 2050

MINISTERIO DE ENERGÍA Y MINAS

● HYDRO 
 ● THERMAL 
 ● SOLAR 
 ● WIND 
 ● OTHER NCRE



MARCH 2014	MARCH 2016
28 Projects	59 Projects
68% Renewable	65% Renewable
34% NCRE*	44% NCRE*

Did we find the solution for projects to be aprovable, construtable and sustainable?

TOTAL	1,949	4,105
Small Hydro (MW)		84
#Small Hydro Projects		23

\*NCRE: Non Conventional Renewable Energy concept includes Small Hydro (less than 20 MW).



# Energy development participatory standards



**ENERGÍA 2050**  
POLÍTICA ENERGÉTICA DE CHILE

## COMPROMISO DE DIÁLOGO

Guía de Estándares de Participación para el  
Desarrollo de Proyectos de Energía

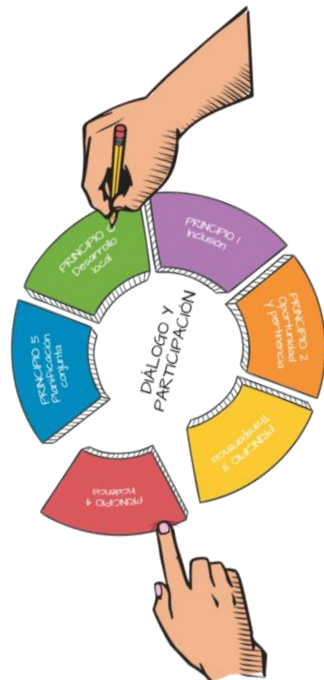




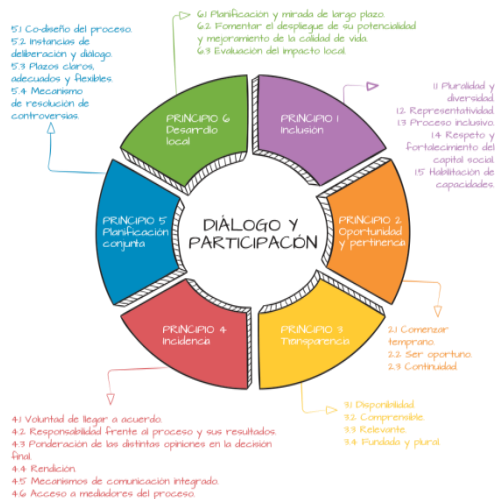
# Components



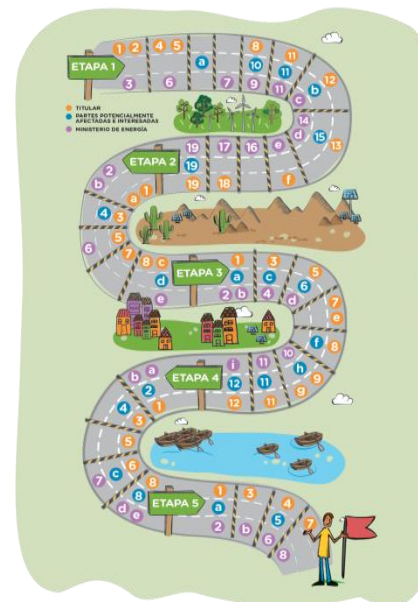
**ENERGIÁ 2050**  
POLÍTICA ENERGÉTICA DE CHILE



Principles



Criteria



Actions



Indicators





- 5.1 Co-diseño del proceso.
- 5.2 Instancias de deliberación y diálogo.
- 5.3 Plazos claros, adecuados y flexibles.
- 5.4 Mecanismo de resolución de controversias.

- 6.1 Planificación y mirada de largo plazo
- 6.2 Fomentar el despliegue de su potencialidad y mejoramiento de la calidad de vida.
- 6.3 Evaluación del impacto local.

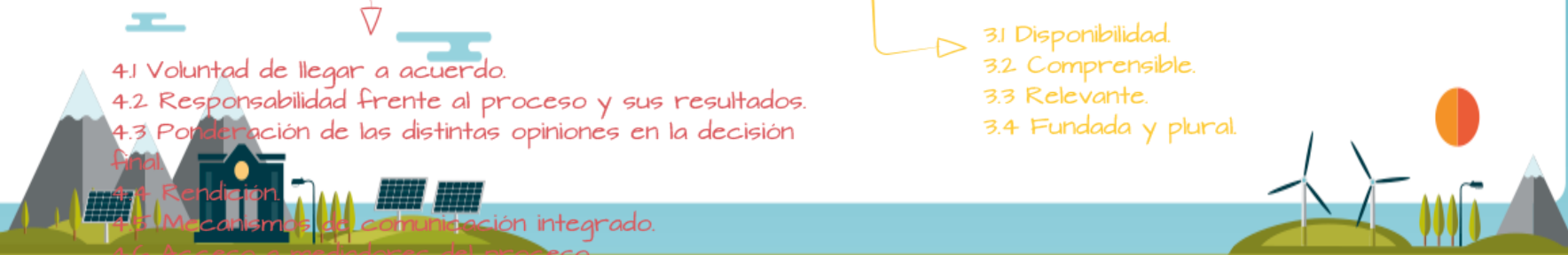


- 1.1 Pluralidad y diversidad.
- 1.2 Representatividad.
- 1.3 Proceso inclusivo.
- 1.4 Respeto y fortalecimiento del capital social.
- 1.5 Habilitación de capacidades.

- 2.1 Comenzar temprano.
- 2.2 Ser oportuno.
- 2.3 Continuidad.

- 3.1 Disponibilidad.
- 3.2 Comprensible.
- 3.3 Relevante.
- 3.4 Fundada y plural.

- 4.1 Voluntad de llegar a acuerdo.
- 4.2 Responsabilidad frente al proceso y sus resultados.
- 4.3 Ponderación de las distintas opiniones en la decisión final.
- 4.4 Rendición.
- 4.5 Mecanismos de comunicación integrado.
- 4.6 Acceso a mediadores del proceso.



# We will not rest...



**ENERÍA 2050**  
POLÍTICA ENERGÉTICA DE CHILE

Local authorities – Communities – 230 projects – 9.500MW

Incorporation of participatory standards in the development of projects

But...



# What for?



**ENERÍA 2050**  
POLÍTICA ENERGÉTICA DE CHILE

## We want energy



## to be good news for our communities





# Local association



**ENERGÍA 2050**  
POLÍTICA ENERGÉTICA DE CHILE



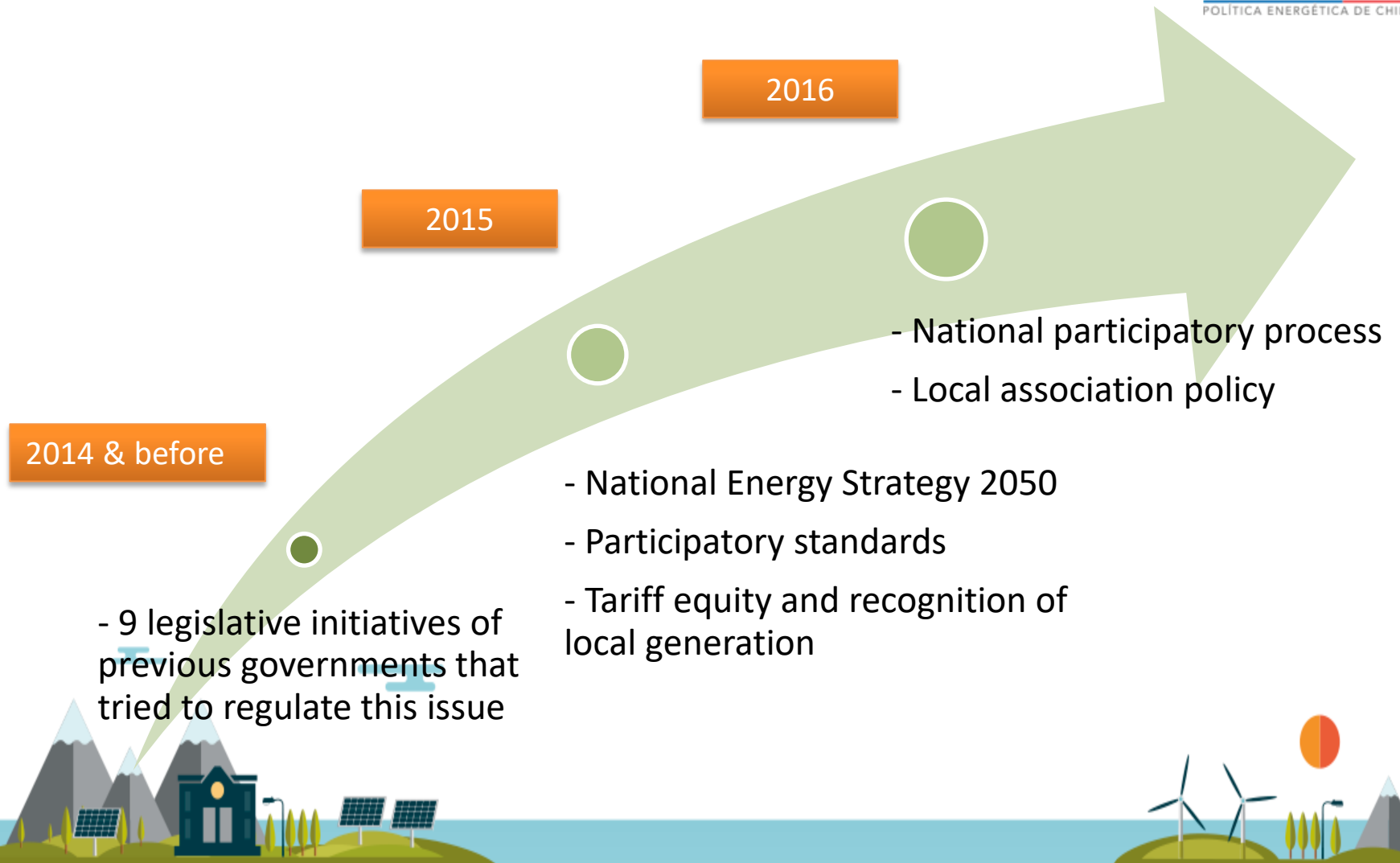
100% of energy projects have integrated local development mechanisms (community / company).



# Our way towards local association



**ENERÍA 2050**  
POLÍTICA ENERGÉTICA DE CHILE



# What kind of association?



**ENERÍA 2050**  
POLÍTICA ENERGÉTICA DE CHILE



# Conclusions



**ENERÍA 2050**  
POLÍTICA ENERGÉTICA DE CHILE

- Chile needs more and better energy.
- Government is improving policies, but we still have a long way to go.
- It is not a matter of energy technology or size.
- Participatory process and local associativity are key.
- Private sector has a huge responsibility.
- Lets work together.





# What do we need from you?



**ENERGÍA 2050**  
POLÍTICA ENERGÉTICA DE CHILE

- Use participatory standards.
- Approach to the Ministry of Energy.
- Develop social assessments in your due diligences.
- Invest in projects that have done proper local engagement.
- We need more and better energy, developed at a human scale.





**ENERÍA 2050**  
POLÍTICA ENERGÉTICA DE CHILE

# Social approach for energy projects in Chile

Ministry of Energy  
June, 2016

